



**US Army Corps
of Engineers**
Philadelphia District
Wanamaker Building
100 Penn Square East
Philadelphia, PA 19107-3390
ATTN: CENAP-OP-R

Public Notice

Public Notice No. CENAP-OP-R-2015-74-35	Date APR 23 2015
Application No. CENAP-OP-R-2015-74-35/Evergreen Great Bay Mitigation Bank	File No.
In Reply Refer to: REGULATORY BRANCH	

The Philadelphia District Corps of Engineers (Corps) has received a Prospectus to establish a compensatory wetland mitigation bank for Department of the Army permits in accordance with the Federal Rules; "Compensatory Mitigation for Losses of Aquatic Resources"; Final Rule (33 CFR Parts 325 and 332 and 40 CFR Part 230) of April 10, 2008.

The purpose of this notice is to solicit comments and recommendations from the public concerning the Prospectus as described below. A full copy of the Prospectus is available for review at the Philadelphia District office.

APPLICANT: Mr. Mark Renna
President
Evergreen Environmental, LLC
121 Carol Place
Wayne, New Jersey 07470

PROJECT NAME: Evergreen Great Bay Mitigation Bank

WATERWAY: Cramer Creek

LOCATION: Latitude 39.575367°, Longitude -74.462954°, Lots 16, 18, 23, Block 2, Bass River Township, Burlington County, New Jersey (see attachment E-1).

ACTIVITY: The proposed Evergreen Great Bay Mitigation Bank site is located in Bass River Township, Burlington County, New Jersey. It is composed of Block 2, Lots 16, 18 and 23. Evergreen will establish and maintain 108 acres of re-established, rehabilitated and preserved wetlands and uplands in accordance with approved mitigation design construction plan (attached).

The site is a former dredged material handling location or confined disposal facility (CDF) associated with the construction of the Garden State Parkway in the 1950s. Prior to construction of the Parkway, the site was emergent tidal marsh. The property is located at 74 Old New York Road at the corner of Bogan's Lane. Most of the site is contained within a previously constructed dredged material containment berm that currently restricts tidal exchange. The interior of the bermed area is predominantly a monoculture of common reed (*Phragmites australis*) and some upland islands

dominated by eastern red cedar. The northern portion of the site is forested, and includes both freshwater wetlands and upland habitats.

The Sponsor intends to establish the bank to provide compensatory mitigation to compensate for unavoidable impacts to Waters of the United States and/or State Waters, including wetlands, occurring in the greater Atlantic Coastal Region. The proposed Service Area is depicted on the excerpt of the USGS Hydrologic Unit Map (E-2). This Service Area shall include the following two (2) Hydrologic Unit Codes (HUC): 020-40-301 (Bank location) and 020-40-302.

On March 2, 1994, the State of New Jersey assumed the Federal Section 404 permit program from the Corps. On that date, the New Jersey Department of Environmental Protection (NJDEP) became the agency responsible for regulating 404 activities in certain waters and wetlands within the State of New Jersey. Evergreen proposes to provide compensatory mitigation at this site for wetland impacts in both assumed and non-assumed freshwater wetlands.

In the service area, the mitigation credits from the bank will be used to mitigate for impacts to estuarine and palustrine emergent and scrub/shrub wetlands, and estuarine and palustrine mudflats and open waters. The forested preservation mitigation credits from the bank will be used to mitigate for impacts to palustrine forested wetlands as well as riparian zone buffer impacts.

The use of a mitigation bank credits must be specifically reviewed and approved by the Corps and NJDEP. The number of credits generated by successful implementation of the bank is based on a functional value assessment and habitat ecological uplift assessment. The proposed mitigation bank design and construction would result in the generation of 27.55 credits.

Mitigation Category	Ratio	Acres	Credits
Estuarine Wetland Restoration (Reestablishment)	1 :1	0.62	0.62
Estuarine Open Water/Mudflat Restoration (Reestablishment)	1 :1	0.02	0.02
Estuarine Wetland Restoration (Rehabilitation)	2 :1	45.21	22.61
Estuarine Open Water/Mudflat Restoration (Rehabilitation)	2 :1	4.53	2.27
Estuarine Tidal Wetland Preservation	27 :1	10.56	0.39
Palustrine Wetland and Upland Preservation	27 :1	44.41	1.64
Powerline Alignment	0 :0	2.85	0.00
Mitigation Bank Total		108.20	27.55

There is a need for compensatory wetland mitigation site opportunities in the Atlantic Coastal Region for estuarine and palustrine wetland impacts associated with Federal and State permitted projects. The proposed wetland mitigation bank is technically feasible and incorporates design concepts applied successfully to other compensatory mitigation sites in the state of New Jersey over the past several decades.

The wetland mitigation plan concept (E-3) for the restoration of the site is to breach the berm and open the site to the tides and restore historical tidal marsh to portions of the

site currently dominated by *Phragmites*. Upland and wetland forested habitats will be preserved and protected. Areas of restored tidal marsh will be excavated to promote tidal hydrology and planted with native emergent marsh species such as *Spartina sp.* Areas of open water and mudflat will also be incorporated.

Oversight of the Bank would be by an Interagency Review Team (IRT) composed of federal and state representatives and chaired by the Corps. The mitigation bank credits will be available for sale to third parties provided such parties (permittees) have received all necessary Federal and State authorizations requiring compensatory mitigation, and the sale has been approved by the IRT.

PURPOSE: The bank sponsor's stated purpose is to create a compensatory wetlands mitigation bank and provide credits for use by the permittees for the unavoidable impact to wetlands within the service area.

This public notice is issued pursuant to the "Compensatory Mitigation for Losses of Aquatic Resources"; Final Rule (33 CFR Parts 325 and 332 and 40 CFR Part 230) of April 10, 2008.

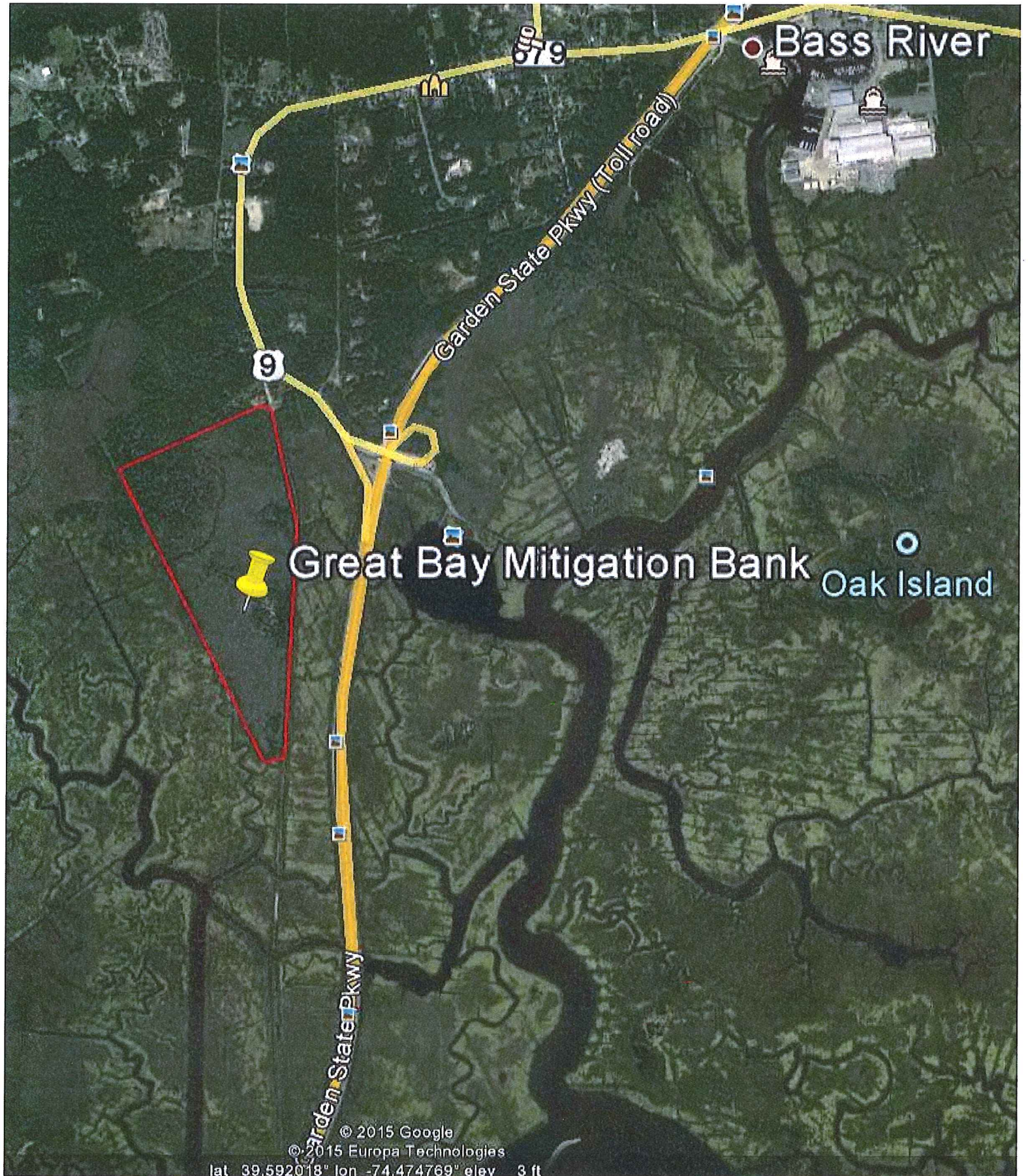
The Corps of Engineers is soliciting comments from the public; Federal, State, and local agencies and officials; and other interested parties in order to consider and evaluate the impacts of this proposed mitigation bank. Any comments received will be considered by the IRT.

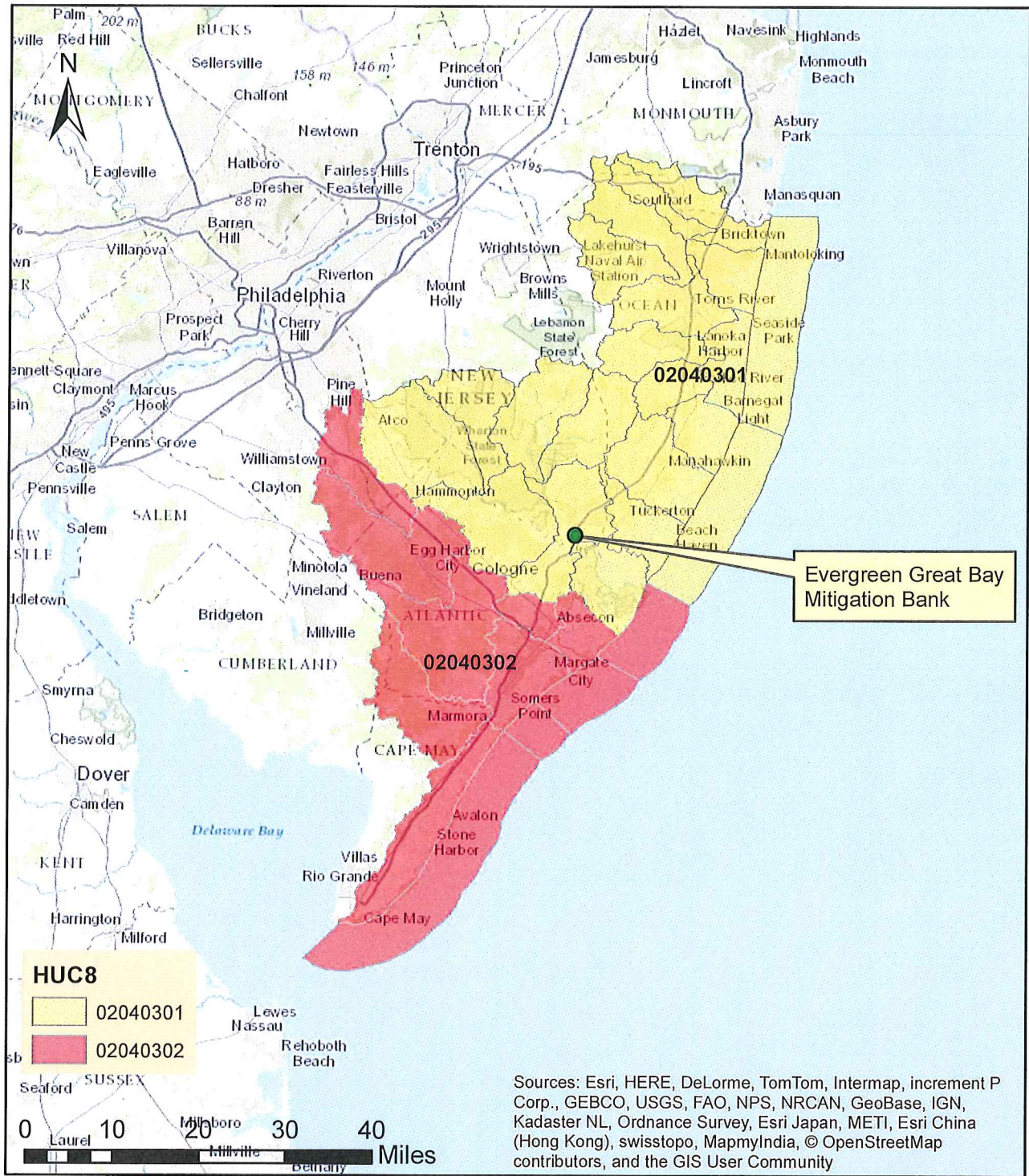
Comments on the proposed bank should be submitted, in writing, within 30 days of the date of this Public Notice to the District Engineer, U.S. Army Corps of Engineers, Philadelphia District, Wanamaker Building, 100 Penn Square East, Philadelphia, Pennsylvania 19107-3390.

Additional information concerning this permit application may be obtained by calling Mr. Michael H. Hayduk at (215) 656-5822 between the hours of 1:00 and 3:30 p.m. or writing this office at the above address.



Frank J. Cianfrani
Chief, Regulatory Branch





OWNER/CLIENT
 EVERGREEN ENVIRONMENTAL, LLC
 232 DORSEY ROAD
 WASHINGTON, DC 20007
 (810) 857-4468 (PHONE)
 (810) 857-4468 (FAX)

SITE/CIVIL ENGINEER
QAKRF
 QAKRF, INC.
 577 FELLOWSHIP ROAD
 SUITE 100
 MOUNT LAUREL, NJ 08054
 (856) 705-6622 (PHONE)
 (856) 705-6622 (FAX)



PROJECT
**EVERGREEN GREAT BAY
 MITIGATION BANK**








DESIGNED BY
RODMAN R. RITCHIE

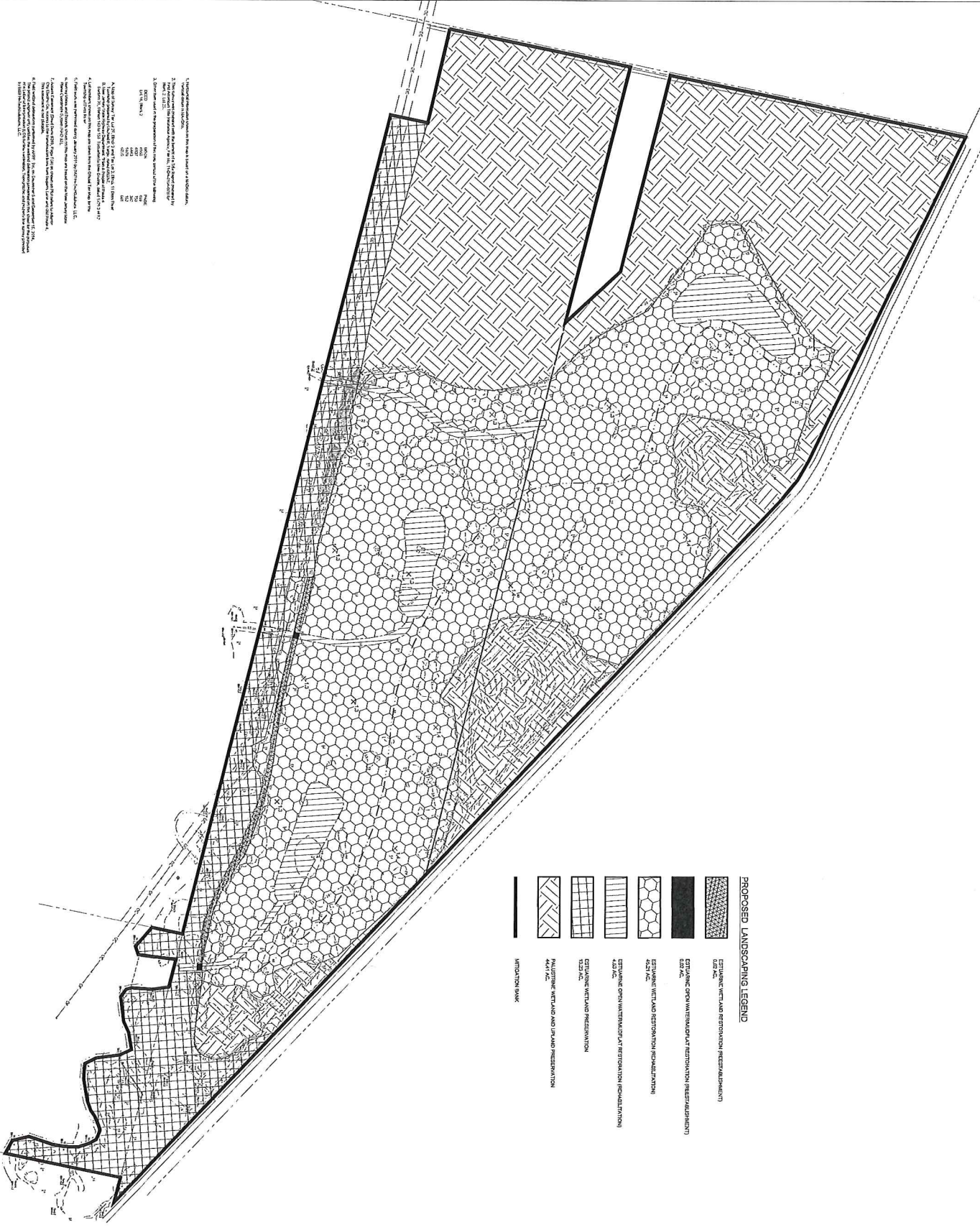
NO.	DATE	DESCRIPTION

DRAWN BY
LANDSCAPING PLAN

SHEET NO.
SHEET 3 OF 3

PROPOSED LANDSCAPING LEGEND

-  ESTABLISH WETLAND RESTORATION RESEMBLEMENT
0.25 AC.
-  ESTABLISH OPEN WATER/SHADY RESTORATION RESEMBLEMENT
0.25 AC.
-  ESTABLISH WETLAND RESTORATION RESEMBLEMENT
4.25 AC.
-  ESTABLISH OPEN WATER/SHADY RESTORATION RESEMBLEMENT
4.25 AC.
-  ESTABLISH WETLAND RESTORATION RESEMBLEMENT
10.25 AC.
-  MULTIPLE WETLAND AND OPENLAND RESTORATION
4.25 AC.
-  MITIGATION BANK



1. The information contained on this drawing was prepared by the ENGINEER.
 2. The ENGINEER has prepared this drawing in accordance with the standards of the State of New Jersey.
 3. The ENGINEER has prepared this drawing in accordance with the standards of the State of New Jersey.
 4. The ENGINEER has prepared this drawing in accordance with the standards of the State of New Jersey.
 5. The ENGINEER has prepared this drawing in accordance with the standards of the State of New Jersey.
 6. The ENGINEER has prepared this drawing in accordance with the standards of the State of New Jersey.
 7. The ENGINEER has prepared this drawing in accordance with the standards of the State of New Jersey.
 8. The ENGINEER has prepared this drawing in accordance with the standards of the State of New Jersey.
 9. The ENGINEER has prepared this drawing in accordance with the standards of the State of New Jersey.
 10. The ENGINEER has prepared this drawing in accordance with the standards of the State of New Jersey.

E-3